



Alexia

allons en france

VERSION - 2.02

TIRE CATALOGUE

5
YEAR WARRANTY
FROM PRODUCTION DATE



Alexia

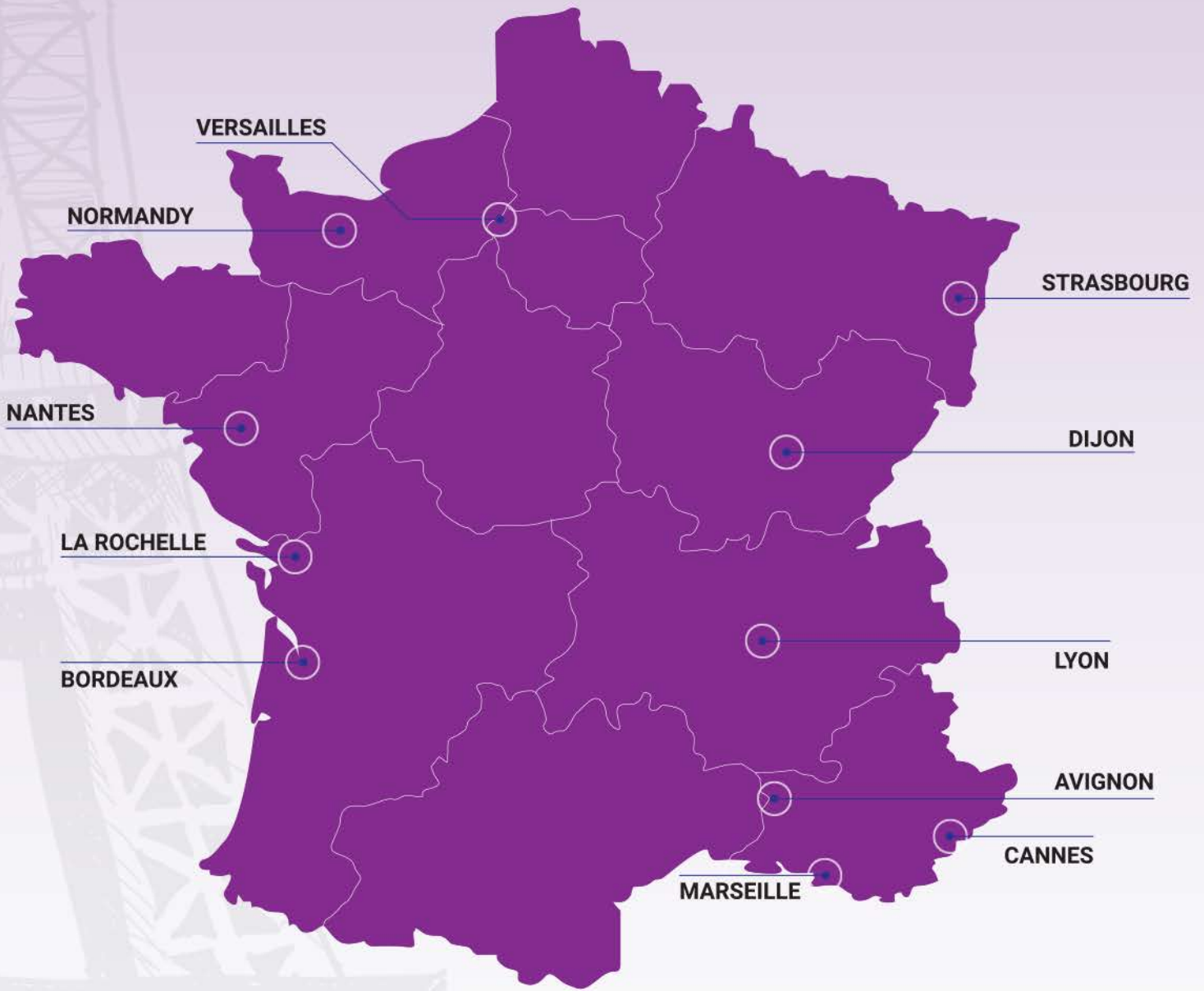
allons en france

5 YEAR WARRANTY
FROM PRODUCTION DATE



allons en france

allons en france



CONTENTS

ULTRA HIGH PERFORMANCE TIRE

CANNES.....	03
MARSEILLE.....	06
LA ROCHELLE.....	13

HIGH PERFORMANCE TIRE

VERSAILLES.....	08
STRASBOURG.....	10
NORMANDY.....	14
BORDEAUX.....	15

SUV, COMMERCIAL CAR TIRE

TOUT-TERRAIN.....	17
LYON.....	18
DIJON.....	19
NANTES.....	22
AVIGNON.....	24
CROCODILE.....	25

LIGHT TRUCK TIRE

NON-STOP 1 - 4.....	27 - 31
---------------------	---------

allons en france

ULTRA HIGH PERFORMANCE TIRE



CANNES

ULTRA HIGH PERFORMANCE TIRE

Big pattern design:

Greatly improving cornering stability at high speed.

Straight Lined central rib design:

Maneuverability is highly improved.



Four main rib design:

Better avoiding slippery.

Asymmetric tread design:

Offers better sporting performance.

➔ OUTSIDE



Dry handling



Dry braking



Wet handling



Wet braking



Cornering



Grip



CANNES

Rim	Size	LI/SS	Tread Depth (mm)	Std. Rim	Section Width (mm)	Overall Diameter (mm)	Standard Pressure (Kpa/PSI)
15	195/50R15	82H	8.0	6J	201	577	300/44
	195/45R16	80V	8.0	6 1/2J	195	582	300/44
	195/45R16	84V XL	8.0	6 1/2J	195	582	340/50
	195/50R16	84V	8.0	6J	201	602	300/44
	195/50R16	88V XL	8.0	6J	201	602	340/50
	195/55R16	87V	8.0	6J	201	620	300/44
	195/55R16	91V XL	8.0	6J	201	620	340/50
16	205/50ZR16	87W	8.2	6 1/2J	214	612	300/44
	205/50ZR16	91W XL	8.2	6 1/2J	214	612	340/50
	205/55R16	91V	8.4	6 1/2J	214	632	300/44
	205/55ZR16	94W XL	8.4	6 1/2J	214	632	340/50
	215/55ZR16	93W	8.2	7J	226	642	300/44
	215/55ZR16	97W XL	8.2	7J	226	642	340/50
	225/50ZR16	92W	8.4	7J	233	632	300/44
	225/50ZR16	96W XL	8.4	7J	233	632	340/50
	225/55ZR16	95W	8.2	7J	233	654	300/44
	225/55ZR16	99W XL	8.2	7J	233	654	340/50
	205/40ZR17	80W	8.2	7 1/2J	212	596	300/44
	205/40ZR17	80Y	8.2	7 1/2J	212	596	300/44
	205/40ZR17	84W XL	8.2	7 1/2J	212	596	340/50
	205/40ZR17	84Y XL	8.2	7 1/2J	212	596	340/50
	205/45ZR17	84W	8.0	7J	206	616	300/44
	205/45ZR17	84Y	8.0	7J	206	616	300/44
	205/45ZR17	88W XL	8.0	7J	206	616	340/50
	205/45ZR17	88Y XL	8.0	7J	206	616	340/50
	205/50ZR17	89W	8.7	6 1/2J	214	638	300/44
	205/50ZR17	93W XL	8.7	6 1/2J	214	638	340/50
	205/50ZR17	93Y XL	8.7	6 1/2J	214	638	340/50
	215/40ZR17	87W XL	8.0	7 1/2J	218	604	340/50
	215/40ZR17	87Y XL	8.0	7 1/2J	218	604	340/50
	215/45ZR17	87W	8.0	7J	213	626	300/44
	215/45ZR17	91W XL	8.0	7J	213	626	340/50
	215/45ZR17	91Y XL	8.0	7J	213	626	340/50
	215/50ZR17	95W XL	8.0	7J	226	648	340/50
215/50ZR17	95Y XL	8.0	7J	226	648	340/50	
17	215/55ZR17	94W	8.2	7J	226	668	300/44
	215/55ZR17	98W XL	8.2	7J	226	668	340/50
	215/55ZR17	98Y XL	8.2	7J	226	668	340/50
	225/45ZR17	91W	8.2	7 1/2J	225	634	300/44
	225/45ZR17	94W XL	8.2	7 1/2J	225	634	340/50
	225/45ZR17	94Y XL	8.2	7 1/2J	225	634	340/50
	225/50ZR17	94W	8.7	7J	233	658	300/44
	225/50ZR17	98W XL	8.7	7J	233	658	340/50
	225/55ZR17	97W	8.4	7J	233	680	300/44
	225/55ZR17	101W XL	8.4	7J	233	680	340/50
	225/55ZR17	101Y XL	8.4	7J	233	680	340/50
	235/45ZR17	94W	8.2	8J	236	644	300/44
	235/45ZR17	97Y XL	8.2	8J	236	644	340/50
	235/55ZR17	103W XL	8.0	7 1/2J	245	690	340/50
	235/55ZR17	103Y XL	8.0	7 1/2J	245	690	340/50
	245/40ZR17	95W XL	8.0	8 1/2J	248	628	340/50
	245/45ZR17	95W	8.2	8J	243	652	300/44
	245/45ZR17	99W XL	8.2	8J	243	652	340/50
	245/45ZR17	99Y XL	8.2	8J	243	652	340/50
	18	215/35ZR18	84W XL	8.0	7 1/2J	218	607
215/35ZR18		84Y XL	8.0	7 1/2J	218	607	340/50
215/40ZR18		85W	8.0	7 1/2J	218	629	300/44
215/40ZR18		89W XL	8.0	7 1/2J	218	629	340/50
215/40ZR18		89Y XL	8.0	7 1/2J	218	629	340/50
215/55ZR18		95W	8.2	7J	226	693	300/44
225/40ZR18		88W	8.2	8J	230	637	300/44

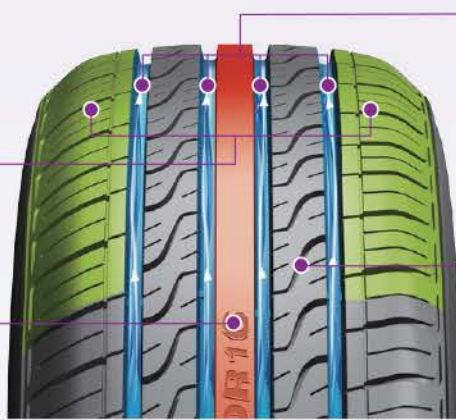
Rim	Size	LI/SS	Tread Depth (mm)	Std. Rim	Section Width (mm)	Overall Diameter (mm)	Standard Pressure (Kpa/PSI)
18	225/40ZR18	92W XL	8.2	8J	230	637	340/50
	225/40ZR18	92Y XL	8.2	8J	230	637	340/50
	225/45ZR18	91W	8.2	7 1/2J	225	659	300/44
	225/45ZR18	95W XL	8.2	7 1/2J	225	659	340/50
	225/45ZR18	95Y XL	8.2	7 1/2J	225	659	340/50
	235/40ZR18	95W XL	8.2	8 1/2J	241	645	340/50
	235/45ZR18	94W	8.2	8J	236	669	300/44
	235/45ZR18	98W XL	8.2	8J	236	669	340/50
	235/45ZR18	98Y XL	8.2	8J	236	669	340/50
	235/55ZR18	104W XL	8.0	7 1/2J	245	715	340/50
	245/40ZR18	97W XL	8.0	8 1/2J	248	653	340/50
	245/40ZR18	97Y XL	8.0	8 1/2J	248	653	340/50
	245/45ZR18	96W	8.2	8J	243	677	300/44
	245/45ZR18	100W XL	8.2	8J	243	677	340/50
	245/45ZR18	100Y XL	8.2	8J	243	677	340/50
	255/35ZR18	94W XL	8.0	9J	260	635	340/50
	255/45ZR18	99W	8.0	8 1/2J	255	687	300/44
	255/45ZR18	103W XL	8.0	8 1/2J	255	687	340/50
	255/55R18	105V	8.0	8J	265	737	300/44
	255/55R18	109V XL	8.0	8J	265	737	340/50
	225/40ZR19	93Y XL	8.0	8J	230	663	340/50
	225/45ZR19	96Y XL	8.0	7 1/2J	225	685	340/50
	235/35ZR19	91W XL	8.2	8 1/2J	241	647	340/50
	235/40ZR19	92W	8.0	8 1/2J	241	671	300/44
	235/40ZR19	96W XL	8.0	8 1/2J	241	671	340/50
	235/50ZR19	103W XL	8.0	7 1/2J	245	719	340/50
	235/55ZR19	105W XL	8.0	7 1/2J	245	741	340/50
	245/35ZR19	89W	8.2	8 1/2J	248	655	300/44
	245/35ZR19	93W XL	8.2	8 1/2J	248	655	340/50
	245/40ZR19	98W XL	8.0	8 1/2J	248	679	340/50
	245/45ZR19	102W XL	8.2	8J	243	703	340/50
	245/55ZR19	103W	8.0	7 1/2J	253	753	300/44
255/35ZR19	92W	8.0	9J	260	661	300/44	
255/35ZR19	96W XL	8.0	9J	260	661	340/50	
255/40ZR19	100Y XL	8.0	9J	260	687	340/50	
255/45ZR19	104W XL	8.0	8 1/2J	255	713	340/50	
255/50R19	103V	8.0	8J	265	739	300/44	
255/50R19	107V XL	8.0	8J	265	739	340/50	
255/55ZR19	107W	8.0	8J	265	763	300/44	
255/55ZR19	111W XL	8.0	8J	265	763	340/50	
255/55ZR19	111Y XL	8.0	8J	265	763	340/50	
265/35ZR19	98Y XL	8.0	9 1/2J	271	669	340/50	
265/50ZR19	106W	8.2	8 1/2J	277	749	300/44	
265/50ZR19	110W XL	8.2	8 1/2J	277	749	340/50	
265/50ZR19	110Y XL	8.2	8 1/2J	277	749	340/50	
275/40ZR19	101W	8.2	9 1/2J	278	703	300/44	
275/40ZR19	105W XL	8.2	9 1/2J	278	703	340/50	
275/40ZR19	105Y XL	8.2	9 1/2J	278	703	340/50	
275/45ZR19	104W	8.0	9J	273	731	300/44	
275/45ZR19	108W XL	8.0	9J	273	731	340/50	
275/45ZR19	108Y XL	8.0	9J	273	731	340/50	
285/45R19	111V XL	8.0	9 1/2J	285	739	340/50	
225/30ZR20	85W XL	7.8	8J	230	644	340/50	
225/35ZR20	90W XL	8.2	8J	230	666	340/50	
235/55ZR20	105W XL	8.0	7 1/2J	245	766	340/50	
245/35ZR20	95W XL	8.0	8 1/2J	248	680	340/50	
255/35ZR20	93W	8.2	9J	260	686	300/44	
255/35ZR20	97W XL	8.2	9J	260	686	340/50	
255/50R20	104V	8.0	8J	265	764	300/44	
265/50R20	111V XL	8.0	8 1/2J	277	774	340/50	
275/40ZR20	106W XL	8.2	9 1/2J	278	728	340/50	
275/40ZR20	106Y XL	8.2	9 1/2J	278	728	340/50	
275/45ZR20	106W	8.5	9J	273	756	300/44	
275/45ZR20	110W XL	8.5	9J	273	756	340/50	
275/45ZR20	110Y XL	8.5	9J	273	756	340/50	
275/55R20	113V	8.0	8 1/2J	284	810	300/44	
315/35ZR20	106W	8.8	11J	320	728	300/44	
315/35ZR20	110W XL	8.8	11J	320	728	340/50	
315/35ZR20	110Y XL	8.8	11J	320	728	340/50	
265/40ZR21	105Y XL	8.0	9 1/2J	271	745	340/50	
275/45R21	110W XL	8.0	9J	273	781	340/50	
245/30ZR22	92W XL	8.0	8 1/2J	248	707	340/50	
265/35ZR22	102W XL	8.0	9 1/2J	271	745	340/50	
285/45ZR22	114W XL	8.0	9 1/2J	285	815	340/50	
285/45ZR22	114Y XL	8.0	9 1/2J	285	815	340/50	
24	255/30ZR24	97W XL	8.0	9J	260	764	340/50

MARSEILLE

HIGH PERFORMANCE TIRE

Widened shoulder tread design increases contacting area, providing better driving stability and reliability.

Continuous straight center rib design provides optimized ground contacting area, guarantees better driving safety.



4 wide longitudinal grooves design greatly improves water drainage and driving stability on slippery roads.



Lateral " S " shaped groove ensures better wet grip.

Excellent Low Noise Level

Optimized variable pitch sequence design disperses road noise and reduces vibration, driving comfort is highly improved.

Symmetrical pattern design and small notched design on the tread increases the friction between the tire and the ground, driving comfort is significantly improved.



Artistic Design

Size engraving in the central rib reveals the stylish design.



Dry handling



Dry braking



Wet handling



Wet braking



Cornering



Grip



MARSEILLE

Rim	Size	LI/SS	Tread Depth (mm)	Std. Rim	Section Width (mm)	Overall Diameter (mm)	Standard Pressure (Kpa/PSI)	
13	175/70R13	82T	7.8	5.00B	177	576	300/44	
	175/70R13	82H	7.8	5.00B	177	576	300/44	
	175/65R14	82T	8.0	5J	177	584	300/44	
	175/65R14	82H	8.0	5J	177	584	300/44	
	175/70R14	84T	8.2	5J	177	602	300/44	
	175/70R14	84H	8.2	5J	177	602	300/44	
	175/70R14	88T XL	8.2	5J	177	602	340/50	
14	185/60R14	82T	8.4	5 1/2J	189	578	300/44	
	185/60R14	82H	8.4	5 1/2J	189	578	300/44	
	185/65R14	86T	8.0	5 1/2J	189	596	300/44	
	185/65R14	86H	8.0	5 1/2J	189	596	300/44	
	185/70R14	88T	8.0	5 1/2J	189	616	300/44	
	185/70R14	88H	8.0	5 1/2J	189	616	300/44	
	195/60R14	86H	8.4	6J	201	590	300/44	
	195/70R14	91T	8.0	6J	201	630	300/44	
	195/70R14	91H	8.0	6J	201	630	300/44	
	205/60R14	88H	7.9	6J	209	602	300/44	
	185/55R15	82V	8.0	6J	194	585	300/44	
	185/60R15	88H XL	8.0	5 1/2J	189	603	340/50	
	185/65R15	88H	8.0	5 1/2J	189	621	300/44	
	185/65R15	92T XL	8.0	5 1/2J	189	621	340/50	
	195/50R15	82V	8.0	6J	201	577	300/44	
	195/55R15	85V	8.0	6J	201	595	300/44	
	195/60R15	88H	8.4	6J	201	615	300/44	
	195/60R15	88V	8.4	6J	201	615	300/44	
	15	195/65R15	91H	8.0	6J	201	635	300/44
		195/65R15	91V	8.0	6J	201	635	300/44
205/60R15		91V	8.2	6J	209	627	300/44	
205/65R15		94V	8.5	6J	209	647	300/44	
205/70R15		96T	8.2	6J	209	669	300/44	
205/70R15		96H	8.2	6J	209	669	300/44	
215/65R15		100H XL	8.2	6 1/2J	221	661	340/50	
215/70R15		98T	8.2	6 1/2J	221	683	300/44	
215/70R15		98H	8.2	6 1/2J	221	683	300/44	
235/75R15		105T	8.2	6 1/2J	235	733	300/44	
235/75R15		105S	8.2	6 1/2J	235	733	300/44	
195/60R16		89H	8.4	6J	201	640	300/44	
205/55R16		91V	8.0	6 1/2J	214	632	300/44	
205/55R16		94W XL	8.0	6 1/2J	214	632	340/50	
205/60R16		92H	8.2	6J	209	652	300/44	
205/60R16		92V	8.2	6J	209	652	300/44	
205/60R16		96V XL	8.2	6J	209	652	340/50	
16	215/55R16	93V	8.2	7J	226	642	300/44	
	215/60R16	95H	8.2	6 1/2J	221	664	300/44	
	215/60R16	95V	8.2	6 1/2J	221	664	300/44	
	215/60R16	99V XL	8.2	6 1/2J	221	664	340/50	
	215/65R16	98T	8.5	6 1/2J	221	686	300/44	
	215/65R16	98H	8.5	6 1/2J	221	686	300/44	
	225/60R16	98H	8.5	6 1/2J	228	676	300/44	
	235/60R16	100H	8.5	7J	240	688	300/44	
	235/60R16	100V	8.5	7J	240	688	300/44	
	235/60R16	104H XL	8.5	7J	240	688	340/50	
	235/65R16	103H	8.2	7J	240	712	300/44	
	17	225/60R17	99T	8.2	6 1/2J	228	702	300/44
225/60R17		99H	8.2	6 1/2J	228	702	300/44	

VERSAILLES

PASSENGER CAR TIRE

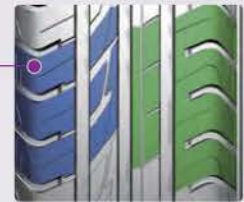
1 Deflected from the pattern design, reduce drive noise.

2 High tensile steel belt, lower rolling resistance, improving handling safety at the same time, more fuel-efficient, environmentally friendly.

3 Improve the driving stability and comfort by adopting jointless bead ring and reinforced bead filler.



4 Endless material layer, increased durability and brake so that more uniform tread ground, handling safety promotion.



Asymmetric tread and shoulder strengthening design provides good handling, ensuring driving safety.

● SINGLE-ORIENTED Y-SHAPED PATTERN DESIGN, PROVIDE A QUICK LINE OR HORIZONTAL DRAINAGE.



Wide linear gap and hole y-shaped design from the water, ensure the safety of slippery roads and driving in bad weather.



Dry handling



Dry braking



Wet handling



Wet braking



Cornering



Grip



VERSAILLES

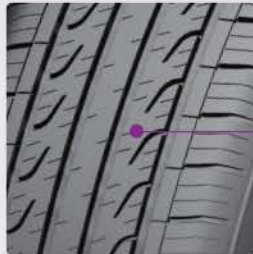
Rim	Size	LI/SS	Tread Depth (mm)	Std. Rim	Section Width (mm)	Overall Diameter (mm)	Standard Pressure (Kpa/PSI)
13	155/65R13	73T	7.8	4.50B	157	532	300/44
	155/80R13	79T	7.8	4.50B	157	578	300/44
	165/65R13	77T	7.8	5.00B	170	544	300/44
	165/70R13	79T	7.8	5.00B	170	562	300/44
	175/70R13	82T	7.8	5.00B	177	576	300/44
	185/70R13	86T	8.0	5.50B	189	590	300/44
14	155/65R14	75T	7.8	4.50B	157	558	300/44
	165/60R14	75H	7.8	5.00B	170	554	300/44
	165/70R14	85T XL	7.8	5J	170	588	340/50
	175/65R14	82T	8.0	5J	177	584	300/44
	175/70R14	88H XL	7.8	5J	177	602	340/50
	185/65R14	86H	8.0	5 1/2J	189	596	300/44
	185/70R14	88T	8.0	5 1/2J	189	616	300/44
	195/60R14	86H	7.9	6J	201	590	300/44
	195/65R14	89H	8.0	6J	201	610	300/44
	195/70R14	91H	8.0	6J	201	630	300/44
15	185/60R15	88H XL	8.4	5 1/2J	189	603	340/50
	195/60R15	88H	7.8	6J	201	615	300/44
	195/60R15	88V	7.8	6J	201	615	300/44
	195/65R15	91H	8.0	6J	201	635	300/44
	195/65R15	95H XL	8.0	6J	201	635	340/50
	195/65R15	91V	8.0	6J	201	635	300/44
	205/70R15	96H	8.0	6J	209	669	300/44
	215/70R15	98H	8.0	6 1/2J	221	683	300/44
16	195/60R16	89H	8.0	6J	201	640	300/44
	205/55R16	91V	8.0	6 1/2J	214	632	300/44
	205/60R16	96V XL	8.0	6J	209	652	340/50
	215/60R16	99V XL	8.0	6 1/2J	221	664	340/50
	225/60R16	98H	8.5	6 1/2J	228	676	300/44

STRASBOURG

PASSENGER CAR TIRE

Excellent Low Noise Level

- Optimization of horizontal groove, reducing the running noise.



- The design of energy saving performance of dry and wet pavement grip performance, Safe Operation, low rolling resistance of balance and unity.
- High Performance economical products comprehensive performance.

Economic



- Optimization of high performance upgrade economic pattern.





STRASBOURG

Rim	Size	LI/SS	Tread Depth (mm)	Std. Rim	Section Width (mm)	Overall Diameter (mm)	Standard Pressure (Kpa/PSI)
13	175/70R13	82T	7	5.00B	177	576	300/44
	175/65R14	82H	8	5J	177	584	300/44
	185/65R14	86H	7	5 1/2J	189	596	300/44
14	185/70R14	88H	7	5 1/2J	189	616	300/44
	195/60R14	86H	7.9	6J	201	590	300/44
	195/70R14	91H	8	6J	201	630	300/44
	205/70R14	98T XL	8.2	6J	209	644	340/50
	185/65R15	88H	7.2	5 1/2J	189	621	300/44
15	195/60R15	88H	7.8	6J	201	615	300/44
	205/60R15	91V	7.2	6J	209	627	300/44
	205/65R15	94V	8	6J	209	647	300/44
	205/60R16	92V	7.9	6J	209	652	300/44
16	215/60R16	95V	8	6 1/2J	221	664	300/44
	215/65R16	98H	8	6 1/2J	221	686	300/44
	225/60R16	98H	8	6 1/2J	228	676	300/44
	235/60R16	100V	8.5	7J	240	688	300/44



Alexia
allons en france



LA ROCHELLE
HIGH-END CAR TIRE

LA ROCHELLE

HIGH-END CAR TIRE



Asymmetric pattern design provide a strong grip and confident maneuvering and tread even wearing during turning.



Four wide longitudinal groove design and wide contact patch helps to deliver a high speed performance and excellent water drainage.



Angular sipes help reduce noise and provide comfortable riding.



Special tread ingredient design with Silicon helps to provide a good grip both on dry and wet road. Longer mileage.



Comfort



High Mileage



Fuel Saving



Handling



Silence



Wet Traction

SIZE	Load Index	Speed Rating	Standard Rim	Section Width (mm)	Overall Diameter (mm)	Max.load		Max.pressure		Tread Depth (mm)	U.T.Q.G
						kg	lbs	kpa	psi		
195/50R15	82	V	6J	201	577	475	1047	350	51	7.9	420AA
185/55R15	82	V	6J	194	585	475	1047	350	51	7.9	420AA
195/55R15	85	V	6J	201	595	515	1135	350	51	7.9	420AA
205/50R16	87	V	6.5J	214	612	545	1201	350	51	7.9	420AA
215/55R16	97	W	7J	226	642	730	1609	340	50	7.9	420AA
225/55R16	95	W	7J	233	654	690	1521	350	51	7.9	420AA
195/50R16	88	V	6J	201	602	560	1235	340	50	7.9	420AA
225/55R17	101	W	7J	233	680	825	1819	340	50	7.9	420AA
205/40R17	84	W	7J	212	596	500	1102	350	51	7.9	420AA
215/40R17	87	W	7.5J	218	604	545	1201	350	51	7.9	420AA
215/45R17	91	W	7J	213	626	615	1356	340	50	7.9	420AA
225/45R17	91	W	7.5J	225	634	615	1356	350	51	7.9	420AA
235/45R17	97	W	8J	236	644	730	1609	340	50	7.9	420AA
205/50R17	93	W	6.5J	214	638	650	1433	340	50	7.9	420AA
225/50R17	98	W	7J	233	658	750	1653	340	50	7.9	420AA
235/50R17	96	W	7.5J	245	668	710	1565	350	51	7.9	420AA
215/55R17	98	W	7J	225	668	750	1653	340	50	7.9	420AA
235/55R17	99	W	7.5J	230	690	775	1709	350	51	7.9	420AA
225/45R18	95	W	7.5J	241	659	615	1356	350	51	7.9	420AA
225/40R18	92	W	8J	243	637	630	1389	340	50	7.9	420AA
235/40R18	95	W	8.5J	218	645	690	1521	350	51	7.9	420AA
245/45R18	100	W	8J	248	677	800	1764	350	51	7.9	420AA
215/35R18	84	W	7.5J	248	607	500	1102	350	51	7.9	420AA
245/40R18	97	W	8.5J	201	653	730	1609	350	51	7.9	420AA
245/35R20	95	W	8.5J	233	680	690	1521	340	50	7.9	420AA

NORMANDY

ECONOMIC CAR TIRE



Big shoulder block pattern with small sipes can avoid uneven wear and effectively reduce the heating up and resonance.



Continuous longitudinal groove design for excellent water drainage, so provide good grip and maneuvering on wet road.



Lateral small sipes design enhance the maneuvering performance.



Use the FEA, Finite Element Analysis, and get a optimized pitch arrangement, displacement to reduce noise.



Comfort



High Mileage



Fuel Saving



Handling



Silence



Wet Traction

SIZE	Load Index	Speed Rating	Standard Rim	Section Width (mm)	Overall Diameter (mm)	Max.load		Max.pressure		Tread Depth (mm)	U.T.Q.G
						kg	lbs	kpa	psi		
175/60R13	77	T	5J	177	540	412	908	300	44	7.7	380AA
165/65R13	77	T	5.00B	170	544	412	908	350	51	7.7	380AA
155/70R13	75	T	4.5J	157	548	387	853	300	44	7.7	380AA
155/80R13	79	T	4.5J	157	578	437	963	300	44	7.7	380AA
155/65R13	73	T	4.5J	157	532	365	805	300	44	7.7	380AA
165/70R13	79	T	5.00B	170	562	437	963	350	51	7.7	380AA
165/70R13 *wsw	83	T	5.00B	170	562	487	1074	340	50	7.7	380AA
175/70R13	82	H	5.00B	177	576	475	1074	350	51	7.7	380AA
185/70R13	86	T	5.50B	189	590	530	1168	350	51	7.7	380AA
185/60R14	82	H	5.5J	189	578	475	1047	350	51	7.7	380AA
165/65R14	79	H	5J	170	570	437	963	350	51	7.7	380AA
175/65R14	82	H	5J	177	584	475	1047	350	51	7.7	380AA
185/65R14	86	H	5.5J	189	596	530	1168	350	51	7.7	380AA
165/70R14	81	T	5J	170	588	462	1019	350	51	7.7	380AA
165/70R14	85	T	5J	170	588	515	1135	340	50	7.7	380AA
175/70R14	84	T	5J	177	602	500	1102	350	51	7.7	380AA
185/70R14	88	T	5.5J	189	616	560	1235	350	51	7.7	380AA
195/70R14	91	T	6J	201	630	615	1356	350	51	7.7	380AA
175/70R14C	91/93	S	5J	177	602	690/1435	1520/1435	375	54	9.0	380AA

BORDEAUX

MIDDLE-END CAR TIRE



Silent pitch arrangement, tread design of unequal pitch width, arrangement and displacement help to provide experience of quiet driving and effectively reduce tire resonant noise.



Four wide longitudinal groove design and wide contact patch helps to deliver a high speed performance and excellent water drainage.



Wide central main rib design on tread center helps maintain a continuous and homolographic contact area for constant straight riding.



Use the leading method FEA, Evenly suffer the pressure, avoid uneven wear. Effectively reduce tyre resonant noise. Perfect high speed performance.



Comfort



High Mileage



Fuel Saving



Handling



Silence



Wet Traction

SIZE	Load Index	Speed Rating	Standard Rim	Section Width (mm)	Overall Diameter (mm)	Max.load		Max.pressure		Tread Depth (mm)	U.T.Q.G
						kg	lbs	kpa	psi		
205/60R14	88	H	6.0J	209	602	560	1235	300	44	7.9	420AA
195/60R14	86	H	6.0J	201	590	530	1168	350	51	7.9	420AA
205/70R14	93	T	6.0J	209	644	650	1433	300	44	7.9	420AA
185/60R15	84	H	5.5J	189	603	500	1102	350	51	7.9	420AA
195/60R15	88	V	6.0J	201	615	560	1235	350	51	7.9	420AA
205/60R15	91	H	6.0J	209	627	615	1356	350	51	7.9	420AA
185/65R15	88	H	5.5J	189	621	560	1235	350	51	7.9	420AA
195/65R15	91	H	6.0J	201	635	615	1356	350	51	7.9	420AA
195/65R15	95	H	6.0J	201	635	690	1521	340	50	7.9	420AA
205/65R15	94	H	6.0J	209	647	670	1477	350	51	7.9	420AA
215/60R15	94	H	6.5J	221	639	670	1477	350	51	7.9	420AA
215/65R15	96	H	6.5J	221	661	710	1565	350	51	7.9	420AA
205/70R15	96	T	6.0J	209	669	710	1565	300	44	7.9	420AA
215/70R15	98	T	6.5J	221	683	750	1653	300	44	7.9	420AA
205/55R16	91	V/W	6.5J	214	632	615	1356	350	51	7.9	420AA
205/60R16	92	H	6.0J	209	652	630	1389	350	51	7.9	420AA
205/60R16	96	H	6.0J	209	652	710	1565	340	50	7.9	420AA
215/60R16	99	H	6.5J	221	664	775	1709	340	50	7.9	420AA
225/60R16	98	V	6.5J	228	676	750	1653	350	51	7.9	420AA
215/65R16	98	H	6.5J	221	686	750	1653	350	51	7.9	420AA
205/65R16	95	H	6.0J	209	672	690	1521	300	44	7.9	420AA
235/60R16	100	H	7.0J	240	688	800	1764	300	44	7.9	420AA
225/60R17	99	H	6.5J	228	702	775	1709	350	51	7.9	420AA



Alexia
allons en france



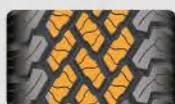
TOUT-TERRAIN
ALL TERRAIN TIRE

TOUT-TERRAIN

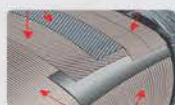
ALL TERRAIN TIRE



Special Shoulder pattern block design, provide strong drive power and excellent off-road performance.



Special pattern design helps reduce profile creep strain on uneven road and strengthen contact patch lateral rigidity.



High-tensile steel wires plus nylon reinforced ply, excellent anti-piercing resistance.



Comfort



High Mileage



Fuel Saving



Handling



Silence



Wet Traction

SIZE	PR	Load Index	Speed Rating	Standard Rim	Section Width (mm)	Overall Diameter (mm)	Max.load		Max.pressure		Tread Depth (mm)	UTQG
							kg	lbs	kpa	psi		
31*10.5R15LT	6	109	Q	8.5J	268	775	1030		2270	350	51	12.5
LT225/75R16	10	115/112	Q	6J	223	744	1215/1120		2680/2470	550	80	11.5
LT245/75R16	10	120/116	Q	7J	248	774	1400/1250		3085/2755	550	80	12.5
LT215/85R16	10	115/112	Q	6J	216	772	1215/1120		2680/2470	550	80	11.5
LT235/85R16	10	120/116	Q	6.5J	235	806	1400/1250		3085/2755	550	80	12.5

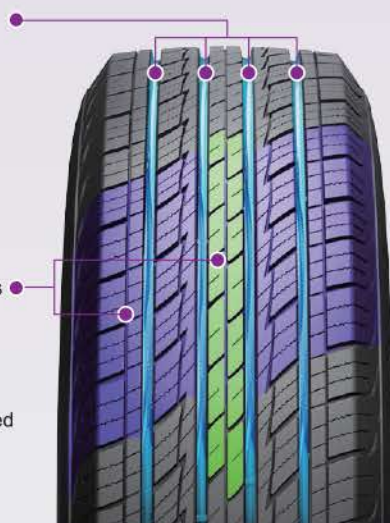
LYON

SUV, COMMERCIAL CAR TIRE

4 longitudinal grooves design guarantees the safe maneuverability on the both dry and wet road.

Superior tread design provides excellent maneuverability and grip performance under all weather conditions.

Noise is dispersed by increased numbers of pitches and the optimized angle design.



Lateral pattern grooves on shoulder part ensures the best drainage performance.



Rim	Size	LI/SS	Tread Depth (mm)	Std. Rim	Section Width (mm)	Overall Diameter (mm)	Standard Pressure (Kpa/PSI)
15	265/70R15	112H	8.5	8J	272	753	300/44
	215/65R16	98H	8.5	6 1/2J	221	686	300/44
	215/65R16	102H	8.5	6 1/2J	221	686	340/50
	215/70R16	100H	8.5	6 1/2J	221	708	300/44
	215/70R16	104H BXL	8.5	6 1/2J	221	708	340/50
16	225/70R16	103H	8.7	6 1/2J	228	722	300/44
	235/60R16	104V XL	8.5	7J	240	688	340/50
	235/70R16	106H	8.5	7J	240	736	300/44
	245/70R16	107H	8.5	7J	248	750	300/44
	245/70R16	107T	8.5	7J	248	750	300/44
	255/70R16	111T	8.5	7 1/2J	260	764	300/44
	265/70R16	112T	8.5	8J	272	778	300/44
	215/60R17	96H	8.5	6 1/2J	221	690	300/44
	225/65R17	102H	8.5	6 1/2J	228	724	300/44
	235/65R17	108H XL	8.5	7J	240	738	340/50
17	245/65R17	107H	8.8	7J	248	750	300/44
	245/70R17	110H	8.5	7J	248	776	300/44
	255/60R17	110H XL	8.5	7 1/2J	260	738	340/50
	255/65R17	114H XL	8.5	7 1/2J	260	764	340/50
	265/65R17	112H	8.5	8J	272	776	300/44
	265/65R17	116H XL	8.5	8J	272	776	340/50
	265/70R17	115T	8.5	8J	272	804	300/44
	275/65R17	119H XL	8.7	8J	279	790	340/50
	225/60R18	100H	8.2	6 1/2J	228	727	300/44
18	235/50R18	101W XL	8.5	7 1/2J	245	693	300/44
	235/60R18	103H	8.5	7J	240	739	300/44
20	275/60R20	119H XL	8.5	8J	279	838	340/50

DIJON

ON-ROAD SUV< TIRE



Tread Pattern Design

Big tread pattern design increases the contacting area with the ground, offering excellent handling and braking performance on all terrain and all weather conditions.



Appearance Design

Exquisite sidewall pattern design represents the fashion and uniqueness of the tire.



Open Shoulder Design

Heat release ability is improved by open shoulder design, tire durability and driving safety is greatly enhanced.



"Pop-up" Design

Stepped groove design avoids small stones embedded into tire patterns damaging the tire, better guarantees the driving stability.



Durability

Deep wavy grooves improve the durability of the tread and wet grip performance on all terrain road conditions.



Dry handling



Dry braking



Wet handling



Wet braking



Cornering



Grip



DIJON

Rim	Size	LI/SS	PR	Tread Depth (mm)	Std. Rim	Section Width (mm)	Overall Diameter (mm)	Standard Pressure (Kpa/PSI)
15	205/65R15	94H	4	8.5	6J	209	647	300/44
	205/70R15	96H	4	8.4	6J	209	669	300/44
	205/70R15	96T	4	8.4	6J	209	669	300/44
	31X10.50R15LT	109R	6	13.0	8 1/2J	268	775	350/50
	31X10.50R15LT	109S	6	13.0	8 1/2J	268	775	350/50
	31X10.50R15LT	109Q	6	13.0	8 1/2J	268	775	350/50
	LT215/75R15	100/97Q	6	12.5	6J	216	703	350/50
	LT235/75R15	104/101R	6	12.5	6 1/2J	235	733	350/50
	LT235/75R15	104/101Q	6	12.5	6 1/2J	235	733	350/50
16	LT225/75R16	115/112Q	10	10.0	6J	223	744	550/80
	235/85R16LT	120/116Q	10	12.5	6 1/2J	235	806	550/80
	LT265/75R16	123/120Q	10	13.0	7 1/2J	267	804	550/80
	LT285/75R16	122/119Q	8	13.0	8J	286	834	450/65
	LT245/75R16	120/116Q	10	12.5	7J	248	774	550/80
17	235/80R17LT	121/118Q	10	10.0	6 1/2J	235	808	550/80
	245/70R17LT	119/116Q	10	13.0	7J	248	776	550/80
	245/75R17LT	121/118Q	10	10.0	7J	248	800	550/80
	LT265/70R17	118/115Q	8	13.0	8J	272	804	450/65
18	285/70R17LT	121/118Q	10	11.5	8 1/2J	292	832	550/80
	LT275/65R18	123/120Q	10	13.0	8J	279	815	550/80



Alexia

allons en france



**FREE MOVING
WITH NO FEAR**

NANTES

SUV, COMMERCIAL CAR TIRE

Excellent Handling – Optimized tread design ensuring the excellent handling performance under all-weather conditions.

Low Noise – Optimized 5 pitch tread design reduces the patter noise and to improve the comfortness.



Optimized Pattern Design

Through 5 pitch design effectively reduces noise and improves comfort.



Excellent Drainage Performance

4 longitudinal grooves interconnecting with the edge grooves offers better drainage performance, safety driving under rainy weather is further guaranteed consequently.

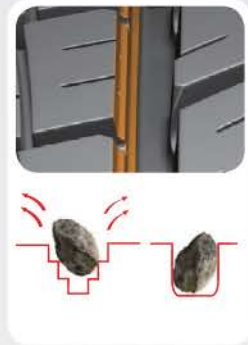


The excellent pattern design

Small notched design on tread patterns improves the durability of the tire and the grip performance on wet ground.

“Pop-up” Design

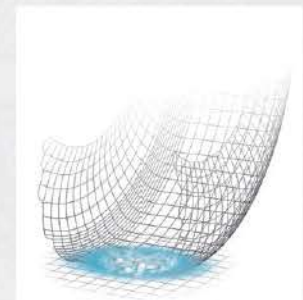
Stepped groove design avoids small stones embedded into tire patterns damaging the tire, better guarantees the driving stability.



- 1 Jointless and high-strength nylon covering layer.
- 2 High tension steel belt.
- 3 Dual carcass construction.
- 4 Jointless and high-strength bead steel wire.

Super Silica Compound

All new winter silica compounded tread provides super grip power on wet ground and less rolling resistance.





NANTES

Rim	Size	LI/SS	Tread Depth (mm)	Std. Rim	Section Width (mm)	Overall Diameter (mm)	Standard Pressure (Kpa/PSI)
15	215/75R15	100S	9.5	6J	216	703	300/44
	215/75R15	100H	9.5	6J	216	703	300/44
	225/70R15	100S	8.0	6 1/2J	228	697	300/44
	225/70R15	100H	8.0	6 1/2J	228	697	300/44
	235/75R15	105S	9.5	6 1/2J	235	733	300/44
	235/75R15	105H	9.5	6 1/2J	235	733	300/44
16	215/65R16	98H	9.5	6 1/2J	221	686	300/44
	265/70R16	112S	9.5	8J	272	778	300/44
	225/60R17	99H	9.5	6 1/2J	228	702	300/44
	225/65R17	102H	9.0	6 1/2J	228	724	300/44
17	235/55R17	99H	9.5	7 1/2J	245	690	300/44
	235/55R17	99S	9.5	7 1/2J	245	690	300/44
	235/65R17	104S	9.2	7J	240	738	300/44
	235/65R17	104H	9.2	7J	240	738	300/44
	235/65R17	108H XL	9.2	7J	240	738	340/50
	245/65R17	107T	8.8	7J	248	750	300/44
	265/70R17	115T	9.0	8J	272	804	300/44
	265/70R17	115H	9.0	8J	272	804	300/44

AVIGNON

SUV, COMMERCIAL CAR TIRE

Bionic pattern design, improve drainage and wet skid resistance, ensuring driving safety.

4 drain tank and open shoulder pattern, makes the tire on a wet road surface played better drainage.



Provides the best ground where broadly linear pattern in the middle of the large shape to ensure optimal control of security.



Small Groove design, impact brought about by the tire and road surface noise to a minimum.

Design of pitch by 6 different designs, best arrangement effectively reduces the noise pattern, greatly improving the comfort.



Rim	Size	LI/SS	Tread Depth (mm)	Std. Rim	Section Width (mm)	Overall Diameter (mm)	Standard Pressure (Kpa/PSI)
15	235/75R15	105H	8.7	6 1/2J	235	733	300/44
	215/65R16	98H	8.5	6 1/2J	221	686	300/44
	215/70R16	100H	8.5	6 1/2J	221	708	300/44
16	225/70R16	103H	8.7	6 1/2J	228	722	300/44
	235/60R16	100H	8.5	7J	240	688	300/44
	225/65R17	102H	8.5	6 1/2J	228	724	300/44
17	235/65R17	108H XL	9.2	7J	240	738	340/50
	235/65R17	108V XL	9.2	7J	240	738	340/50
	265/65R17	112H	9.5	8J	272	776	300/44
	265/65R17	116H XL	9.5	8J	272	776	340/50
18	235/60R18	107H XL	8.5	7J	240	739	340/50
	235/60R18	107V XL	8.5	7J	240	739	340/50
	255/55R18	109V XL	8.0	8J	265	737	340/50
	255/55R18	109H XL	8.0	8J	265	737	340/50

CROCODILE

MUD TERRAIN TIRE



The bionic tiger claw pattern provides strong grip on the mountain filed, desert, mud and other bad road conditions.



Shield sidewall design with 6-7mm thicker than the ordinary tire, the tire damage probability is reduced by 80%.



The up-and-down groove can throw out the mud easily and has better braking ability.



The bump design in the shoulder groove can prevent stone and reduce the damage to the tire.



The self-repairing technology ensures great puncture resistance.



Dry handling



Dry braking



Wet handling



Wet braking



Cornering



Grip

Rim	Size	L/SS	Tread Depth (mm)	Std. Rim	Section Width (mm)	Overall Diameter (mm)	Standard Pressure (Kpa)
15	215/75R15LT	106/103N	15.5	6J	216	703	450
	235/75R15LT	110/107N	15.5	6 2/1J	235	733	450
	30*9.50R15LT	104N	15.5	7 1/2J	240	750	350
	31*10.50R15LT	109N	15.5	8 1/2J	268	775	350
	33*12.50R15LT	108N	15.5	10J	318	826	250
	35*12.50R15LT	113N	15.5	10J	318	877	250
16	225/75R16LT	110/107N	15.5	6J	223	744	450
	245/75R16LT	114/111N	15.5	7J	248	774	450
	265/70R16LT	117/114N	15.5	8J	272	778	450
	265/75R16LT	119/116N	15.5	7 1/2J	267	804	450
	285/75R16LT	122/119N	15.5	8J	286	834	450
17	245/70R17LT	114/110N	15.5	7J	248	776	450
	265/65R17LT	120/117N	15.5	8J	272	776	550
	265/70R17LT	118/115N	15.5	8J	272	804	450
	33*12.50R17	120Q	15.5	10J	318	826	450
	35*12.50R17	121Q	15.5	10J	318	877	350
	37*13.50R17LT	121Q	15.5	11J	345	928	350
18	235/60R18	103N	15.5	7J	240	739	250
	33*12.50R18	118Q	15.5	10J	318	826	450
	35*12.50R18	123Q	15.5	10J	318	877	450
20	33*12.50R20	114Q	15.5	10J	318	826	450
	35*12.50R20	121Q	15.5	10J	318	877	450
	37*13.50R20LT	127Q	15.5	10J	318	928	450
22	35*12.50R22	117Q	15.5	10J	318	877	450
	37*13.50R22LT	123Q	15.5	11J	345	928	450
26	37*13.50R26LT	117Q	15.5	11J	345	928	450



Alexia
allons en france



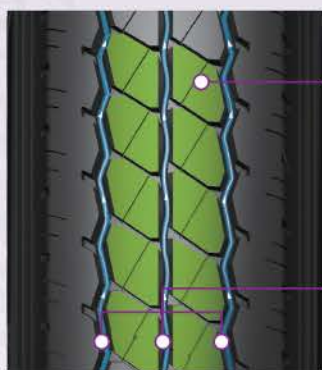
**YOUR ECONOMICAL
SOLUTION FOR TRANSPORTATION**

NON-STOP 1

LIGHT TRUCK TIRE

Safety: Three longitudinal grooves design and wide rib shaped pattern design enhances the water drainage performance and handling safety.

Extra long mileage: Enhanced tire body construction design and optimized compound offers extra long mileage. The small notched design on shoulder part reduces heat generation and guarantees the driving safety.



Wide rib shaped pattern design and the optimized notched design enhances the grip performance.

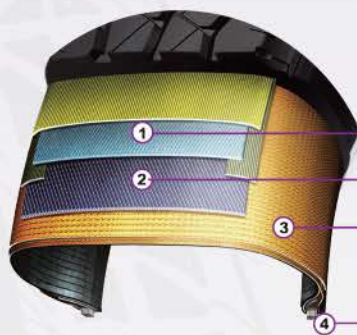
Drainage grooves increase the driving safety and handling performance on wet ground.



Enhanced tire body construction design guarantees the driving safety.

The small notched design on shoulder part reduces heat generation and noise, increases the applicability on all road conditions.

Strengthened Tire Body Construction



- ① Jointless and strengthened nylon cover belt.
- ② Higher tensility steel belt.
- ③ Duplex and high endurance tire body construction.
- ④ High tensility and jointless steel for bead toe area.



Rim	Size	LI/SS	PR	Tread Depth (mm)	Std. Rim	Section Width (mm)	Overall Diameter (mm)	Standard Pressure (Kpa/PSI)
16	6.50R16LT (TL)	107/102L	10	10.4	5.50F	185	750	560/81
	6.50R16LT(TT)	107/102L	10	10.4	5.50F	185	750	560/81
	6.50R16LT(TT)	107/102N	10	10.4	5.50F	185	750	560/81
	7.00R16LT (TL)	111/107L	10	10.4	5.50F	200	775	560/81
	7.00R16LT (TL)	115/110L	12	10.4	5.50F	200	775	670/97
	7.00R16LT(TT)	115/110L	12	10.4	5.50F	200	775	670/97
	7.00R16LT(TT)	115/110M	12	10.4	5.50F	200	775	670/97
	7.00R16LT(TT/TL)	115/110N	12	10.4	5.50F	200	775	670/97
	7.50R16LT (TL)	122/118L	14	11.0	6.00G	215	805	770/112
	7.50R16LT(TT)	122/118L	14	11.0	6.00G	215	805	770/112
	7.50R16LT(TT)	122/118M	14	11.0	6.00G	215	805	770/112
	7.50R16LT(TT/TL)	120/116N	12	11.0	6.00G	215	805	670/97

NON-STOP 2

LIGHT TRUCK TIRE

Economic & Durable: Widened tread design and special tread compound improves driving stability and wear-resistant performance.

Great Adaptability: Longitudinal groove design and lateral pattern design offers better grip ability on wet ground, applicable perfectly for rural transportation needs.

Travel Free: Three longitudinal deepened grooves provides outstanding drainage performance on wet ground.

Heavy Load & Anti-wear: Reinforced carcass and unique tread compound design guarantees heavy load ability.



“Pop-up” Design

Stepped groove design avoids small stones embedded into tire patterns.



Enhanced Carcass Design

Reinforced carcass design guarantees heavy load ability.

Excellent Drainage Performance

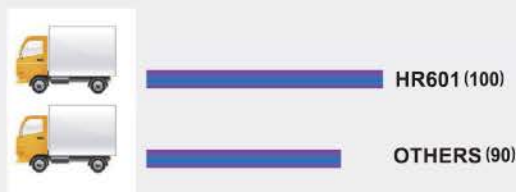
“Z” shape groove design provides better drainage Performance, making the pattern more applicable for rural road conditions.

More Wear-Resistant & More Economic

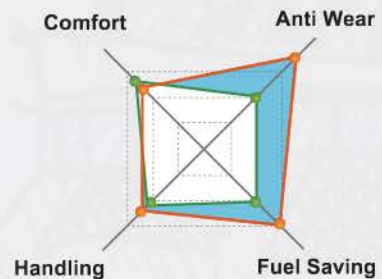
Wide tread pattern design improves the wear-resistant performance. All new compound offers lower fuel consumption and guarantees rural driving safety.

Performance Test

Anti Wear Ratio Comparison



- HR601
- OTHERS





NON-STOP 2

Rim	Size	LI/SS	PR	Tread Depth (mm)	Std. Rim	Section Width (mm)	Overall Diameter (mm)	Standard Pressure (Kpa/PSI)
13	155R13C	90/88P	8	8.2	4 1/2J	157	578	450/65
	155R13C	90/88R	8	8.2	4 1/2J	157	578	450/65
	165R13C	94/93P	8	8.2	4 1/2J	165	594	450/65
	165R13C	94/93Q	8	8.2	4 1/2J	165	594	450/65
	165/70R13C	88/86Q	6	8.8	5J	170	562	375/55
	175/70R14C	95/93Q	6	9.0	5J	177	602	375/55
14	175/70R14C	95/93T	6	9.0	5J	177	602	375/55
	185R14C	102/100Q	8	10.0	5 1/2J	189	652	450/65
	185R14C	102/100R	8	10.0	5 1/2J	189	652	450/65
	195R14C	106/104Q	8	10.0	5 1/2J	201	668	450/65
	195R14C	106/104R	8	10.0	5 1/2J	201	668	450/65
	195/70R15C	104/102T	8	10.0	6J	201	655	450/65
15	195/70R15C	93/90Q	6	10.0	6J	201	655	375/55
	195/70R15C	93/90R	6	10.0	6J	201	655	375/55
	195/70R15C	104/102R	8	10.0	6J	201	655	450/65
	195R15C	106/104Q	8	10.0	5 1/2J	196	693	450/65
	195R15C	106/104R	8	10.0	5 1/2J	196	693	450/65
	225/70R15C	100/97Q	6	9.0	6 1/2J	228	697	350/50
	225/70R15C	112/110R	8	9.0	6 1/2J	228	697	450/65
	225/70R15C	112/110T	8	9.0	6 1/2J	228	697	450/65
	185/75R16C	100/97R	8	9.0	5J	184	684	450/65
	185/75R16C	104/102R	8	9.0	5J	184	684	480/70
16	195/65R16C	104/102Q	8	8.3	6J	201	660	480/70
	195/65R16C	104/102R	8	8.3	6J	201	660	480/70
	195/75R16C	107/105R	8	9.0	5 1/2J	196	698	480/70
	205/65R16C	107/105T	8	8.3	6J	209	672	480/70
	205/65R16C	107/105R	8	8.3	6J	209	672	480/70
	205/75R16C	113/111R	10	9.2	6J	203	714	550/80
	205/75R16C	110/108R	8	9.2	6J	203	714	450/65
	215/65R16C	109/107R	8	8.3	6 1/2J	221	686	480/70
	215/65R16C	109/107T	8	8.3	6 1/2J	221	686	480/70
	215/75R16C	112/109R	10	9.2	6J	216	728	550/80
	215/75R16C	113/111R	8	9.2	6J	216	728	480/70
	225/65R16C	112/110Q	8	10.0	6 1/2J	228	698	480/70
	225/65R16C	112/110R	8	10.0	6 1/2J	228	698	480/70
	235/65R16C	115/113R	8	9.2	7J	240	712	480/70
235/65R16C	115/113T	8	9.2	7J	240	712	480/70	
235/65R16C	121/119R	10	9.2	7J	240	712	575/83	

NON-STOP 3

LIGHT TRUCK TIRE



Stronger carcass construction helps effectively improve endurance and loading performance.



At the time to enhance tire traction, confident to provide excellent drainage and improve wet-skid resistance.



Wider central pattern block provides strong driving performance.



Dry handling



Dry braking



Wet handling



Wet braking



Cornering

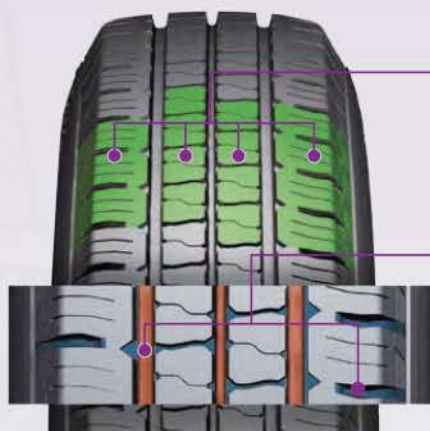


Grip

Rim	Size	LI/SS	PR	Tread Depth (mm)	Std. Rim	Section Width (mm)	Overall Diameter (mm)	Standard Pressure (Kpa)
12	155R12LT/C	88/86N	6PR	7.0	4.5B	157	550	350
	155R12LT/C	88/86N	8PR	7.0	4.5B	157	550	450
	155R13LT/C	85/83N/S	6PR	7.0	4.5B	157	578	350
	155R13LT/C	90/88N/S	8PR	7.0	4.5B	157	578	450
13	165/70R13LT/C	88/86S	8PR	7.0	5.0B	170	562	450
	165/70R13LT/C	88/86S	6PR	7.0	5.0B	170	562	375
	165R13LT/C	94/92S	8PR	7.5	4.5B	167	596	450
	175R13LT/C	97/95R	8PR	8.0	5.0B	177	610	450
	165R14LT/C	96/95R	8PR	7.5	4 1/2J	167	622	450
14	185R14LT/C	102/100R	8PR	7.0	5 1/2J	188	650	450
	195R14LT/C	105/103N	6PR	9.0	5 1/2J	196	668	350
	195R14LT/C	105/103N	8PR	9.0	5 1/2J	196	668	450
	205R14LT/C	109/107N	6PR	9.5	6J	208	684	375
	205R14LT/C	109/107N	8PR	9.5	6J	208	684	450
	185R15LT/C	103/102R	6PR	9.5	5 1/2J	189	677	350
15	185R15LT/C	103/102R	8PR	9.5	5 1/2J	189	677	450
	195R15LT/C	107/105N	6PR	9.0	5 1/2J	196	693	350
	195R15LT/C	107/105N	8PR	9.0	5 1/2J	196	693	450
	195/85R15LT/C	113/111L	8PR	10.0	5 1/2J	196	693	450
	185/75R16LT/C	100/97R	8PR	10.0	5J	184	684	450
	185/75R16LT/C	104/102 R	8PR	10.0	5J	184	684	475
	195/85R16LT/C	114/112L	12PR	10.0	5 1/2J	185	750	670
16	205/85R16LT/C	117/115L	12PR	10.0	6J	215	805	670
	6.50R16LT (TL)	110/105M	12PR	10.0	5.5F	185	750	670
	6.50R16LT (TT)	110/105M	12PR	10.0	5.5F	185	750	670
	6.50R16LT (TL)	107/102N/M	10PR	10.0	5 1/2J	185	750	560
	6.50R16LT (TT)	107/102N/M	10PR	10.0	5.5F	185	750	560
	7.00R16LT (TL)	115/110N	12PR	10.0	5 1/2J	200	775	670
	7.00R16LT (TT)	115/110N	12PR	10.0	5.5F	200	775	670
	7.50R16LT (TL)	120/116N	12PR	10.0	6J	215	805	670
	7.50R16LT (TT)	120/116N	12PR	10.0	6.0G	215	805	670

NON-STOP 4

LIGHT TRUCK TIRE



- Strengthen the tire structure and special recipes, highlights the superior load bearing capacity and economy.
- Longitudinal Grooves and horizontal block patterns designed to improve adhesion of wetlands, perfect for urban and rural roads.



Three longitudinal deepened grooves provide better drainage.



- using high strength C/C 2 layer structure to ensure high load of tires.
- surface, ensures the tyre's safety and stability.
- strengthening bead ensured safety at high load.



Rim	Size	LI/SS	PR	Tread Depth (mm)	Std. Rim	Section Width (mm)	Overall Diameter (mm)	Standard Pressure (Kpa/PSI)
14	175/65R14C	90/88T	6	9.0	5J	177	584	375/55
	195R15C	106/104R	8	10.0	5 1/2J	196	693	450/65
15	205/70R15C	106/104R	8	8.4	6J	209	669	450/65
	215/70R15C	109/107S	8	8.5	6 1/2J	221	683	450/65
	195/65R16C	104/102T	8	8.3	6J	201	660	480/70
16	195/75R16C	107/105T	8	9.0	5 1/2J	196	698	480/70
	205/65R16C	107/105T	8	8.3	6J	209	672	480/70
	215/65R16C	109/107T	8	8.3	6 1/2J	221	686	480/70
	235/65R16C	115/113R	8	9.2	7J	240	712	480/70



Alexia

allons en france